

VARIABLE VOLUME AIR TERMINAL UNITS																			
DRAWING REFERENCE	MANUFACTURER	MODEL	SERVICE	NOMINAL CASING SIZE	INLET SIZE (mm)	RANGE (L/s)	CASING DIMENSIONS (mm)			HOT WATER HEATING COIL								REMARKS	
							LENGTH	WIDTH	HEIGHT	ROWS	AIR				WATER				
											FLOW (L/s)	EAT (°C)	LAT (°C)	COL APD (Pa)	FLOW (L/s)	EMT (°C)	LWT (°C)		COL WPD (Pa)
VAWH-3	E.H. PRICE	SDV-5000	HEATING	10	175ø	45-315	1205	320	350	4	315	12.8	29.5	115	13.2	40.5	33.8	1.52	Oversized CASING, ATTENUATOR
VAWH-5	E.H. PRICE	SDV-5000	HEATING	14	300ø	150-820	1205	440	500	4	820	12.8	29.5	180	38.6	40.5	34.4	6.46	Oversized CASING, ATTENUATOR
VAWH-6	E.H. PRICE	SDV-5000	HEATING	16	350ø	210-1035	1205	450	610	4	1035	12.8	29.5	185	59.0	40.5	35.5	10.22	Oversized CASING, ATTENUATOR
VAWH-2	E.H. PRICE	SDV-5000	REHEAT	8	150ø	35-220	1150	250	305	2	165	12.8	25.6	45	9.5	40.5	36.6	2.81	Oversized CASING, ATTENUATOR
VAWH-6	E.H. PRICE	SDV-5000	REHEAT	16	350ø	210-1225	1150	450	610	3	920	12.8	25.6	180	25.7	40.5	32.7	4.07	Oversized CASING, ATTENUATOR

GRILLE						
DRAWING REFERENCE	MANUFACTURER	MODEL NUMBER	PANEL SIZE			NECK SIZE
			MM	IN	MM	
SUPPLY DIFFUSERS - HIGH INDUCTION CEILING						
SD-12	NAD KLIMA	DAL358/Q500/603	600x600	24x24	225ø	
SD-13	NAD KLIMA	DAL358/Q600/603	600x600	24x24	250ø	
RETURN GRILLES - CEILING PLENUM						
RG-1	PRICE	PDDR/612	600x600	24x24	550x550	
RG-2	PRICE	PDDR/612	600x300	24x12	550x250	
RG-4	PRICE	80B12	1200x600	48x24	1150x500	
EXHAUST GRILLES - EGG-CREATE CEILING						
EG-2	PRICE	80B12	600x300	24x12	550x250	

FANS										
ELECTRICAL V/Ph/Hz	INLET SOUND POWER LEVELS (10 ⁻¹² WATTS)								REMARKS	
	1	2	3	4	5	6	7	8		
120/160	67	69	66	66	62	58	50	48	PROVIDE VAR/GEN EC MOTOR, CW/DAL ON MOTOR FOR BALANCING. DIRECT DRIVE.	

TYPICAL PIPING ARRANGEMENT FOR
REHEAT COILS WITH 2-WAY CONTROL VALVE
 N.T.S.

SUPPORT DUCT MINIMUM TWO LOCATIONS

FLEXIBLE DUCTWORK (MIN. LENGTH = 1830MM)

SCREW, TAPE AND SEAL ALL CONNECTIONS AS SPECIFIED

SUPPORT PLENUM WITH AIRCRAFT CABLE MINIMUM 4 LOCATIONS

INLET PLENUM

HIGH INDUCTION TYPE SUPPLY DIFFUSER

BD

TYPICAL RUNOUT TO HIGH INDUCTION DIFFUSER

N.T.S.

WU LHSB RENOVATION

1151 Richmond St. London

**MECHANICAL LEGEND, DRAWING LIST, ABBREVIATIONS,
DETAILS & SCHEDULES**

Project No.: 10500.2 Drawn By: NNT Pcd Date: 05/02/08

WESTERN UNIVERSITY

Western
UNIVERSITY CANADA

Chorley+Bisset
CONSULTING ENGINEERS

200 GERRARD AVE. UNIT 800 250 CITY CENTRE AVE., SUITE 400
LONDON ON N6A 1H1 OTTAWA ON K1R 8K7

2008-05-26

ISSUED FOR TENDER

Chorley+Bisset
CONSULTING ENGINEERS

200 GERRARD AVE. UNIT 800 250 CITY CENTRE AVE., SUITE 400
LONDON ON N6A 1H1 OTTAWA ON K1R 8K7

2008-05-26

ISSUED FOR TENDER

Chorley+Bisset
CONSULTING ENGINEERS

200 GERRARD AVE. UNIT 800 250 CITY CENTRE AVE., SUITE 400
LONDON ON N6A 1H1 OTTAWA ON K1R 8K7

2008-05-26

ISSUED FOR TENDER

Chorley+Bisset
CONSULTING ENGINEERS

200 GERRARD AVE. UNIT 800 250 CITY CENTRE AVE., SUITE 400
LONDON ON N6A 1H1 OTTAWA ON K1R 8K7

2008-05-26

ISSUED FOR TENDER

Chorley+Bisset
CONSULTING ENGINEERS

200 GERRARD AVE. UNIT 800 250 CITY CENTRE AVE., SUITE 400
LONDON ON N6A 1H1 OTTAWA ON K1R 8K7

2008-05-26

ISSUED FOR TENDER

Chorley+Bisset
CONSULTING ENGINEERS

200 GERRARD AVE. UNIT 800 250 CITY CENTRE AVE., SUITE 400
LONDON ON N6A 1H1 OTTAWA ON K1R 8K7

2008-05-26

ISSUED FOR TENDER

Chorley+Bisset
CONSULTING ENGINEERS

200 GERRARD AVE. UNIT 800 250 CITY CENTRE AVE., SUITE 400
LONDON ON N6A 1H1 OTTAWA ON K1R 8K7

2008-05-26

ISSUED FOR TENDER

Chorley+Bisset
CONSULTING ENGINEERS

200 GERRARD AVE. UNIT 800 250 CITY CENTRE AVE., SUITE 400
LONDON ON N6A 1H1 OTTAWA ON K1R 8K7

2008-05-26

ISSUED FOR TENDER

Chorley+Bisset
CONSULTING ENGINEERS

200 GERRARD AVE. UNIT 800 250 CITY CENTRE AVE., SUITE 400
LONDON ON N6A 1H1 OTTAWA ON K1R 8K7

2008-05-26

ISSUED FOR TENDER

Chorley+Bisset
CONSULTING ENGINEERS

200 GERRARD AVE. UNIT 800 250 CITY CENTRE AVE., SUITE 400
LONDON ON N6A 1H1 OTTAWA ON K1R 8K7

2008-05-26

ISSUED FOR TENDER

Chorley+Bisset
CONSULTING ENGINEERS

200 GERRARD AVE. UNIT 800 250 CITY CENTRE AVE., SUITE 400
LONDON ON N6A 1H1 OTTAWA ON K1R 8K7

2008-05-26

ISSUED FOR TENDER

Chorley+Bisset
CONSULTING ENGINEERS

200 GERRARD AVE. UNIT 800 250 CITY CENTRE AVE., SUITE 400
LONDON ON N6A 1H1 OTTAWA ON K1R 8K7

2008-05-26

ISSUED FOR TENDER

Chorley+Bisset
CONSULTING ENGINEERS

200 GERRARD AVE. UNIT 800 250 CITY CENTRE AVE., SUITE 400
LONDON ON N6A 1H1 OTTAWA ON K1R 8K7

2008-05-26

ISSUED FOR TENDER

Chorley+Bisset
CONSULTING ENGINEERS

200 GERRARD AVE. UNIT 800 250 CITY CENTRE AVE., SUITE 400
LONDON ON N6A 1H1 OTTAWA ON K1R 8K7

2008-05-26

ISSUED FOR TENDER

Chorley+Bisset
CONSULTING ENGINEERS

200 GERRARD AVE. UNIT 800 250 CITY CENTRE AVE., SUITE 400
LONDON ON N6A 1H1 OTTAWA ON K1R 8K7

2008-05-26

ISSUED FOR TENDER

Chorley+Bisset
CONSULTING ENGINEERS

200 GERRARD AVE. UNIT 800 250 CITY CENTRE AVE., SUITE 400
LONDON ON N6A 1H1 OTTAWA ON K1R 8K7

2008-05-26

ISSUED FOR TENDER

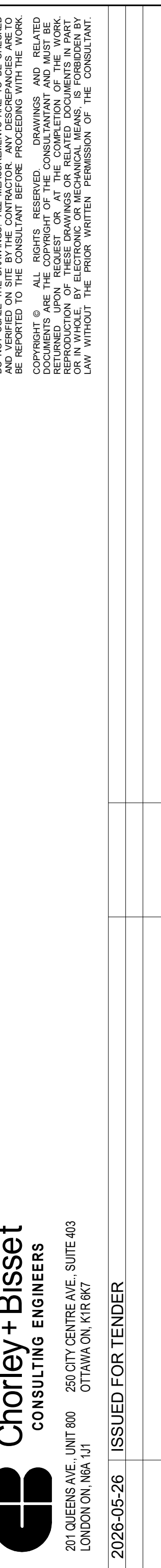
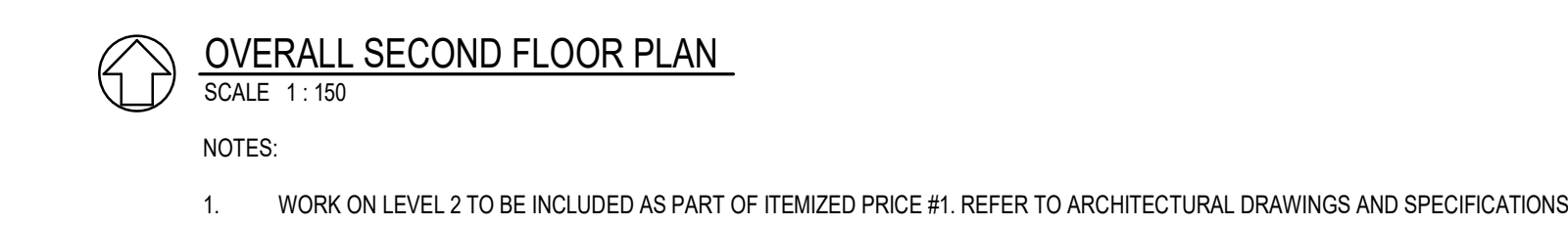
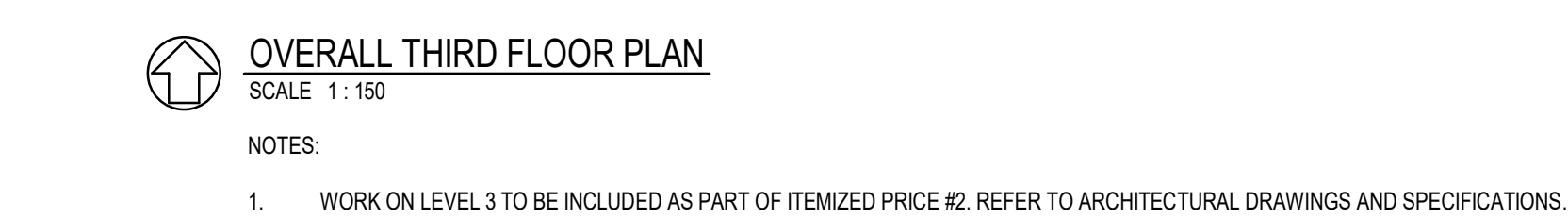
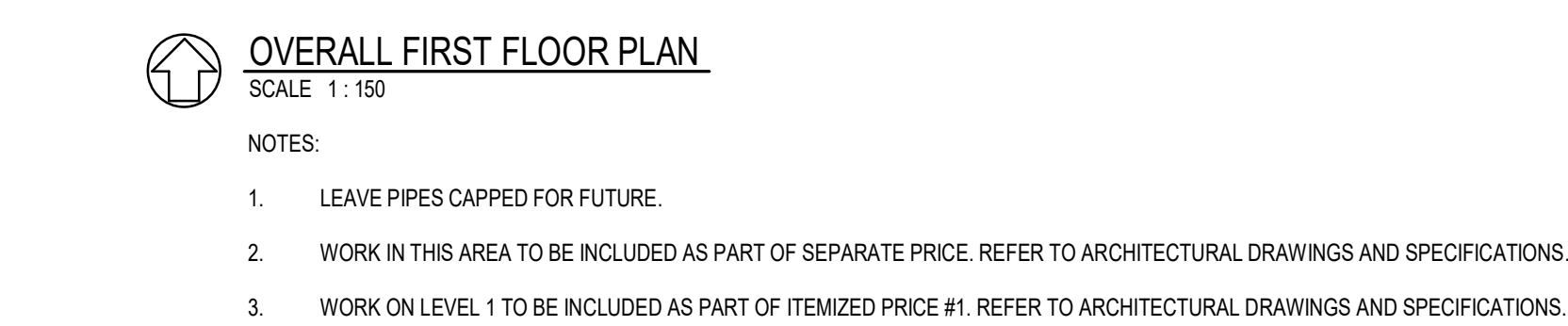
Chorley+Bisset
CONSULTING ENGINEERS

200 GERRARD AVE. UNIT 800 250 CITY CENTRE AVE., SUITE 400
LONDON ON N6A 1H1 OTTAWA ON K1R 8K7

2008-05-26

ISSUED FOR TENDER

Chorley+Bisset
CONSULTING ENGINEERS



WU LHSB RENOVATION

151, Boland St, London

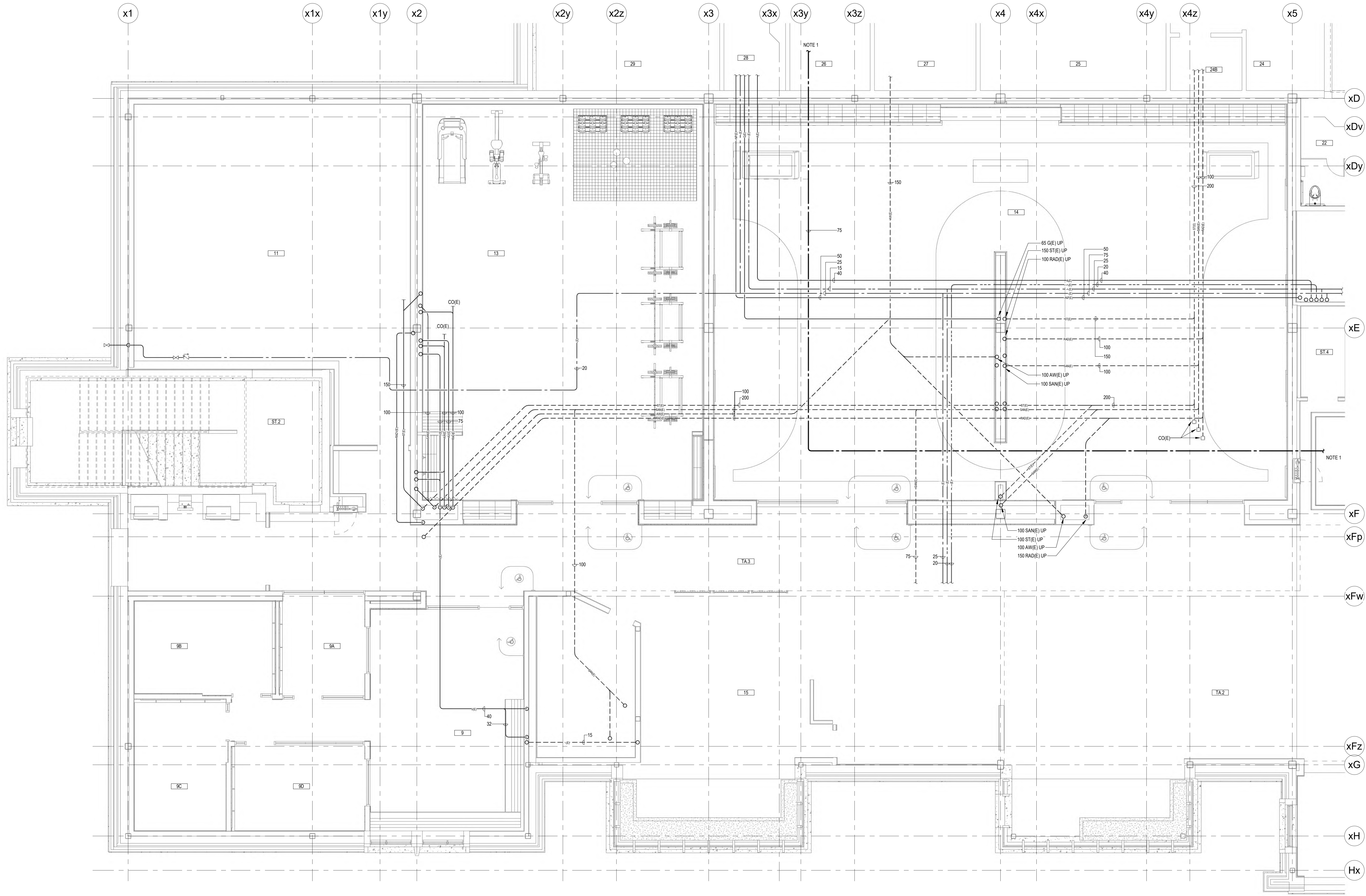
WESTERN UNIVERSITY

Project No.: 10500.2

Drawn By: NNT

Plot Date: 002026

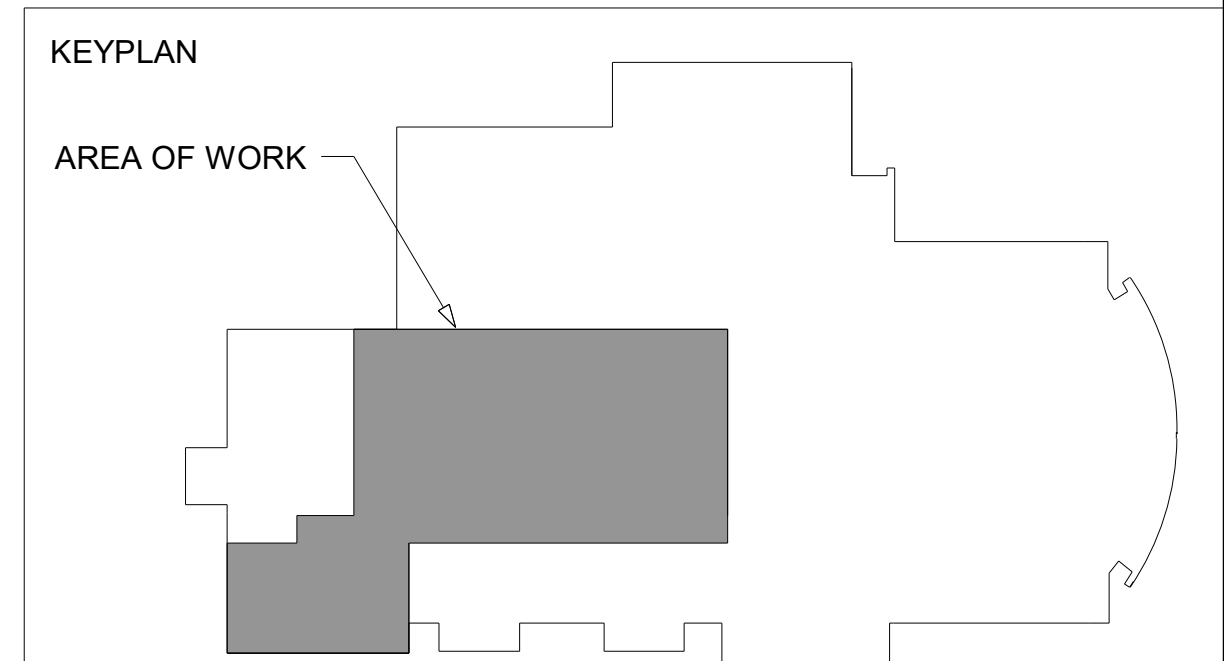
OVERALL FLOOR PLANS

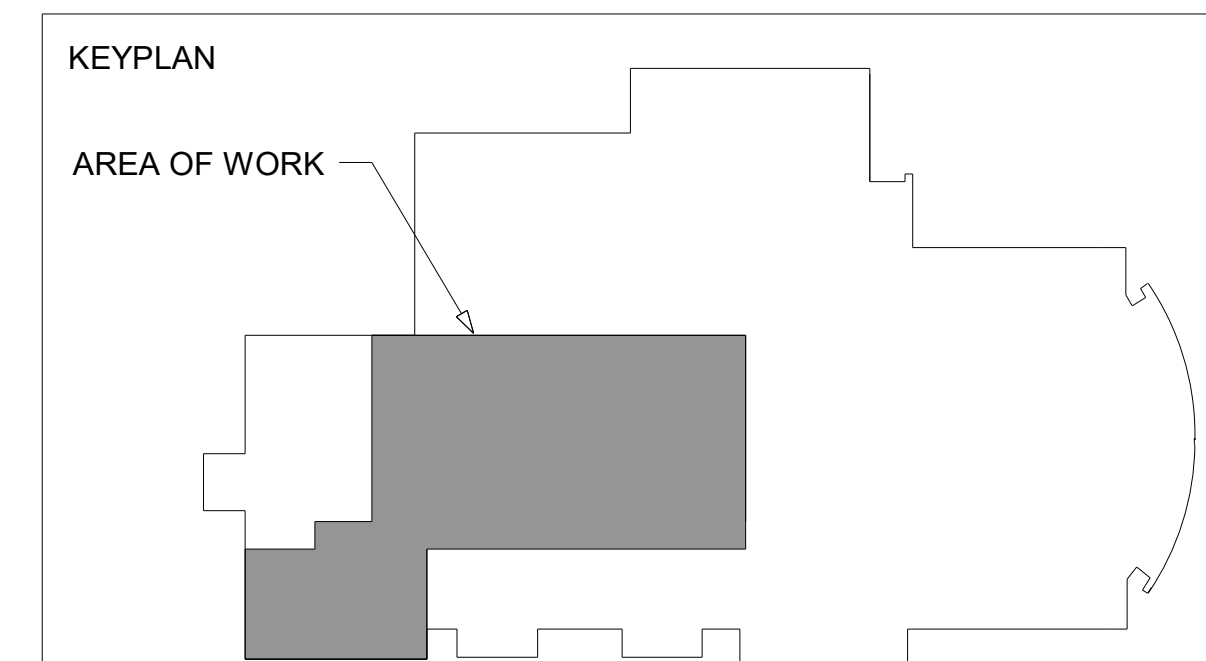


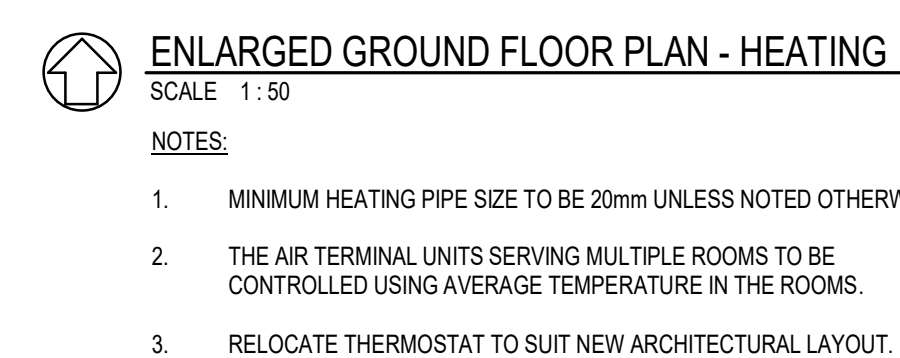
ENLARGED GROUND FLOOR PLAN - PLUMBING
SCALE: 1:50


NOTES:

- SEE OVERALL PLAN ON M1.2 FOR CONTINUATION
- DASHED PIPING IS BELOW GRADE








Charley + Bisset
 CONSULTING ENGINEERS
 201 QUEEN'S WAY UNIT 100 260 CITY CENTRE AVE. SUITE 403
 OTTAWA ON K1R 1J1



WU LHSB RENOVATION

115 Richmond St. London

WESTERN UNIVERSITY

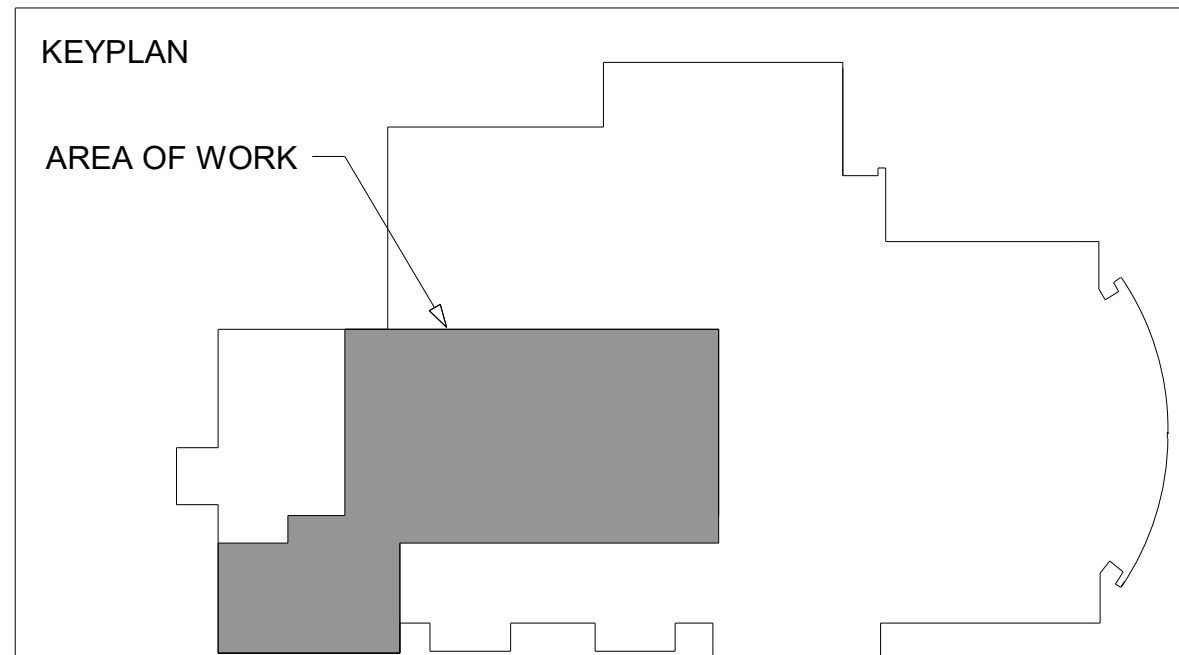
Project No.: 106000 2

Drawn By: NNT

Plot Date: 09/25/08

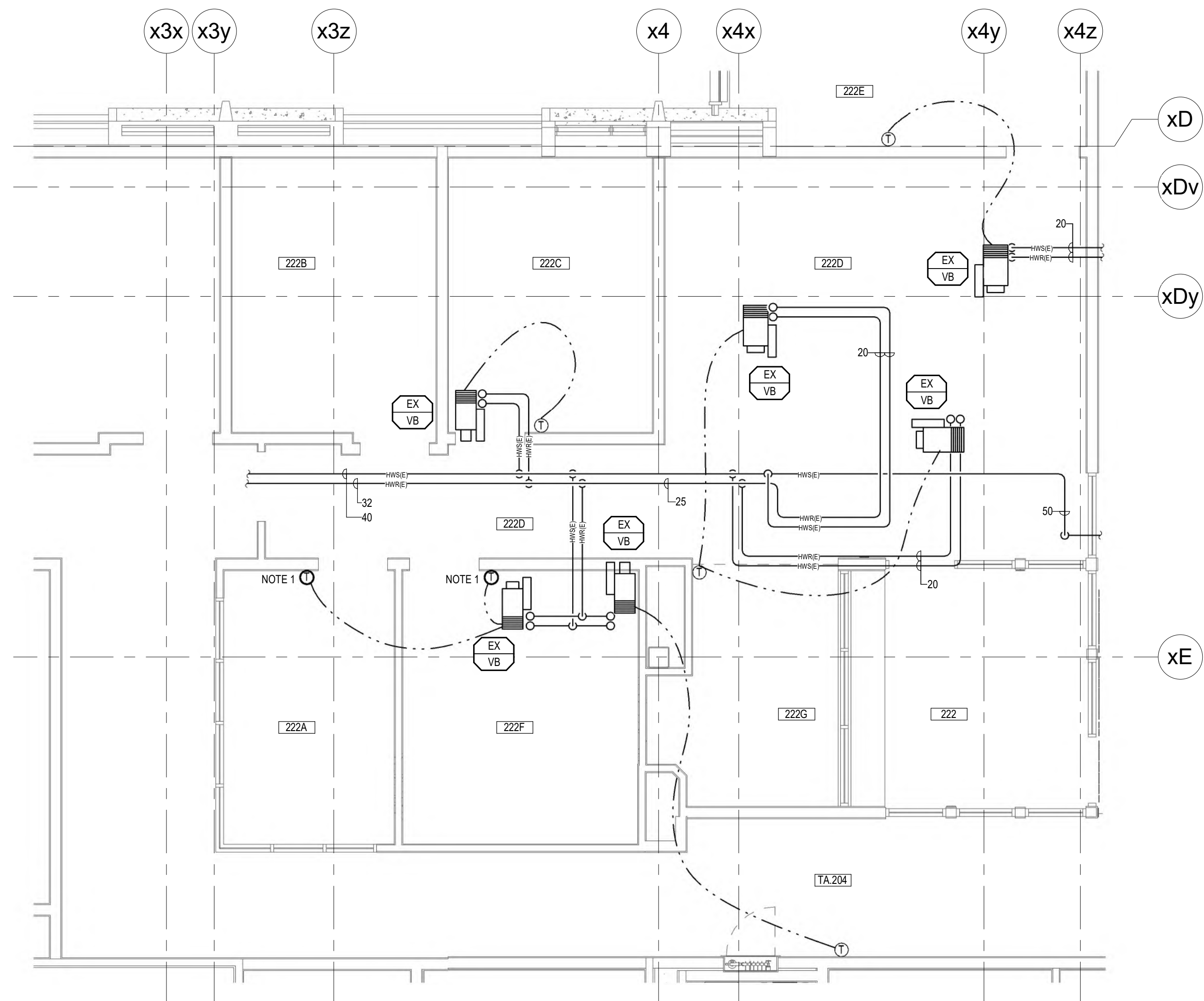
ENLARGED GROUND FLOOR PLAN - HEATING

M2.3



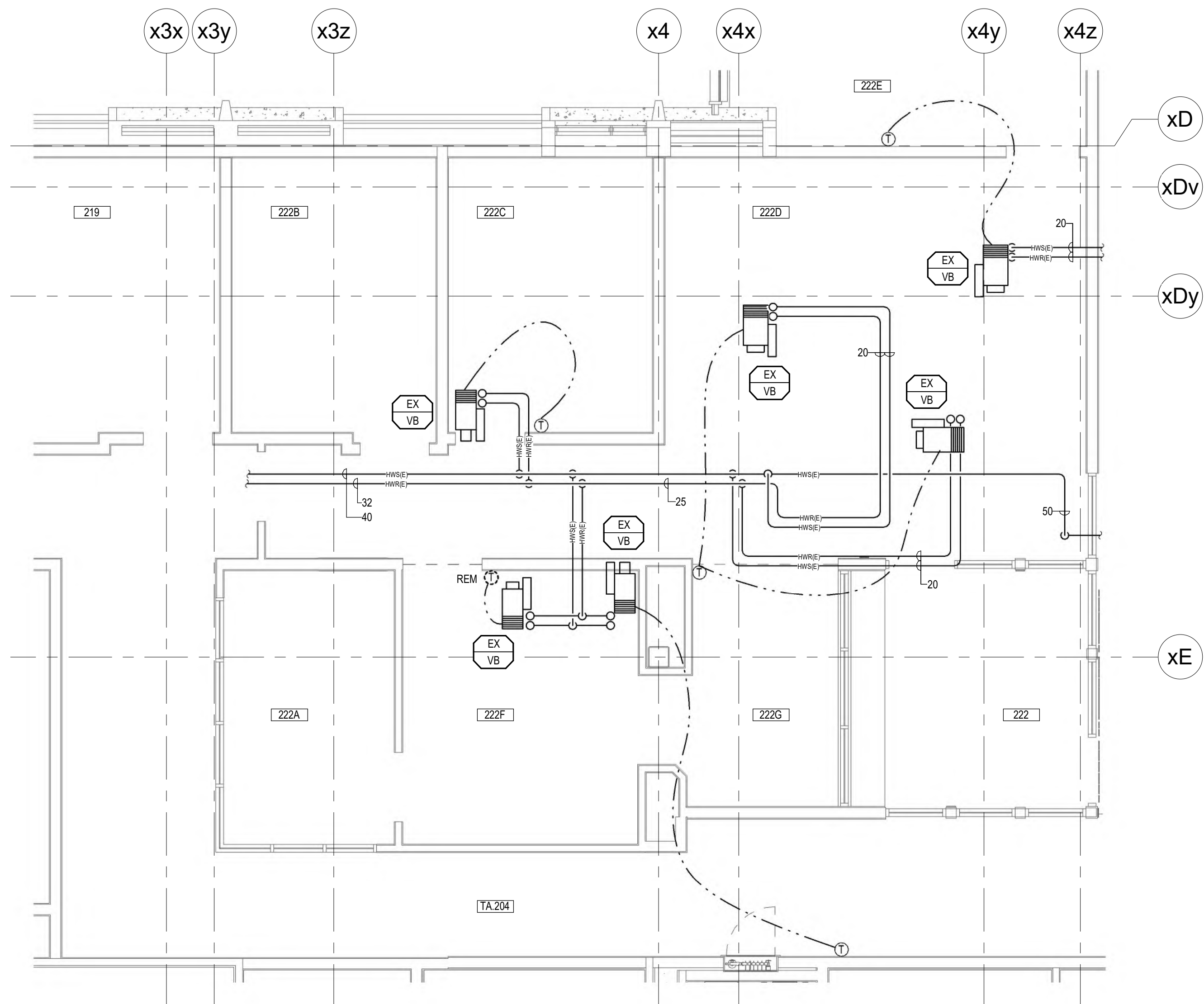
NOTES:

1. WORK IN THIS AREA TO BE INCLUDED AS PART OF SEPARATE PRICE. REFER TO ARCHITECTURAL DRAWINGS AND SPECIFICATIONS.
2. CONNECT GRILLE/DIFFUSER TO EXISTING DUCT ABOVE (NOT SHOWN). ORIGINAL DESIGN AIRFLOWS SHOWN. BALANCE TO PRE-DEMOLITION AIRFLOWS.
3. PROVIDE FLEXIBLE DUCT CONNECTIONS ON INLET AND OUTLET OF EXHAUST FAN.

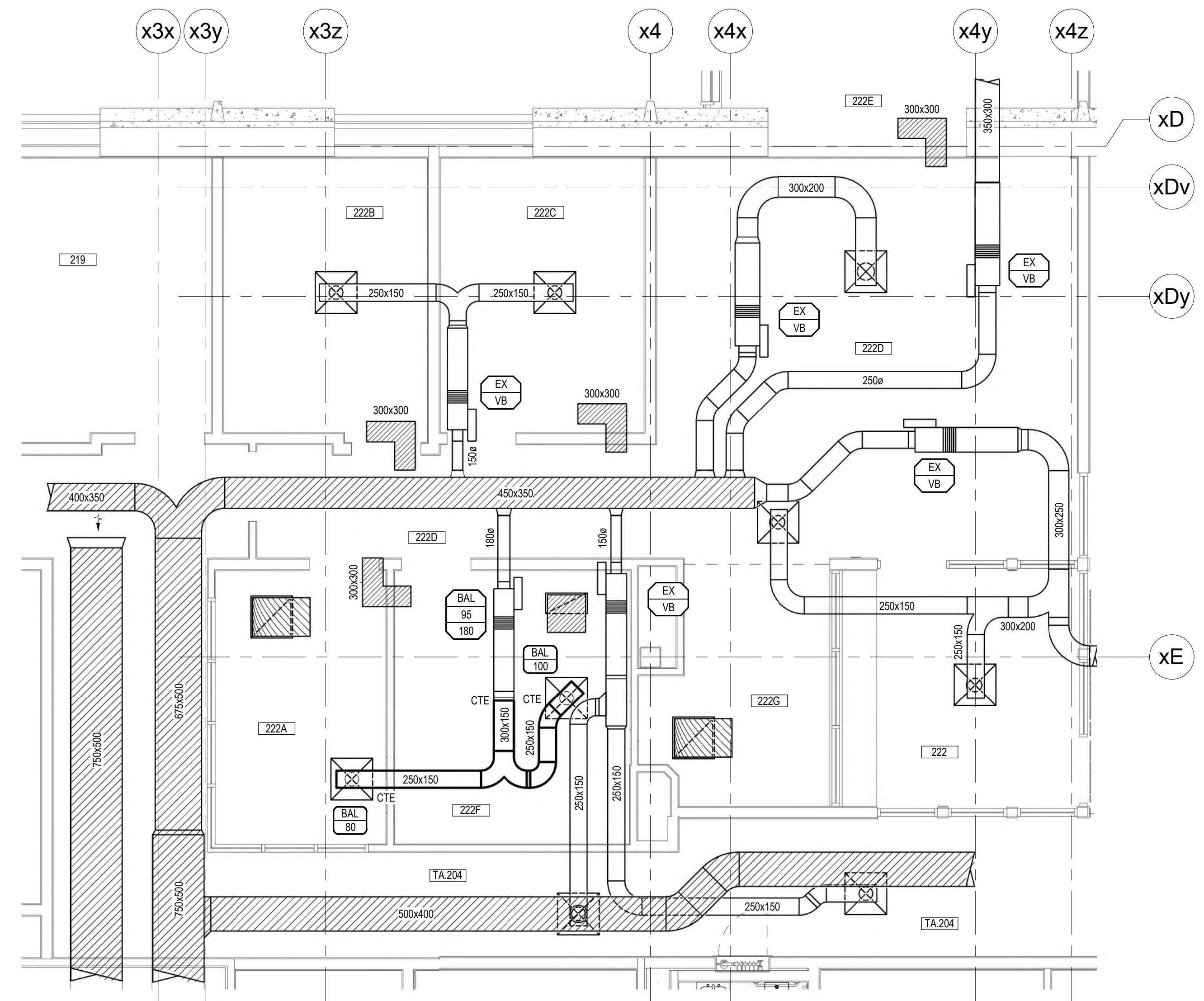


ENLARGED SECOND FLOOR PLAN - HEATING
SCALE 1:50

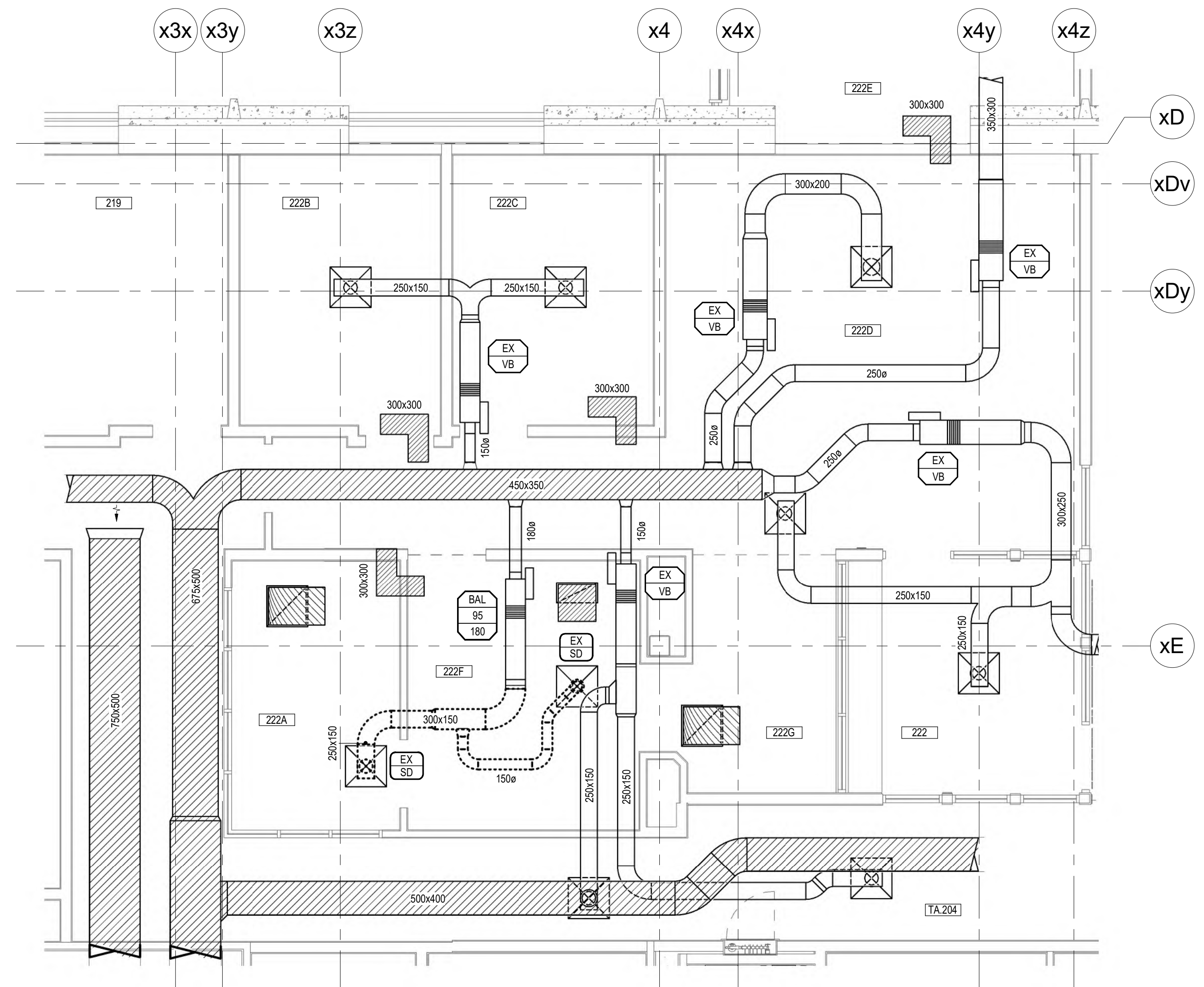
- NOTES:
1. THE AIR TERMINAL UNITS SERVING MULTIPLE ROOMS TO BE CONTROLLED USING AVERAGE TEMPERATURE IN THE ROOMS.



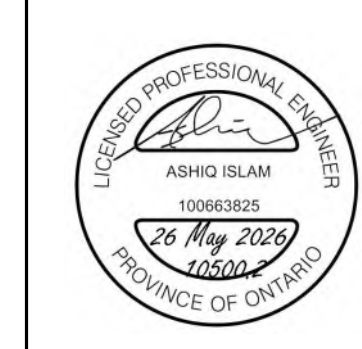
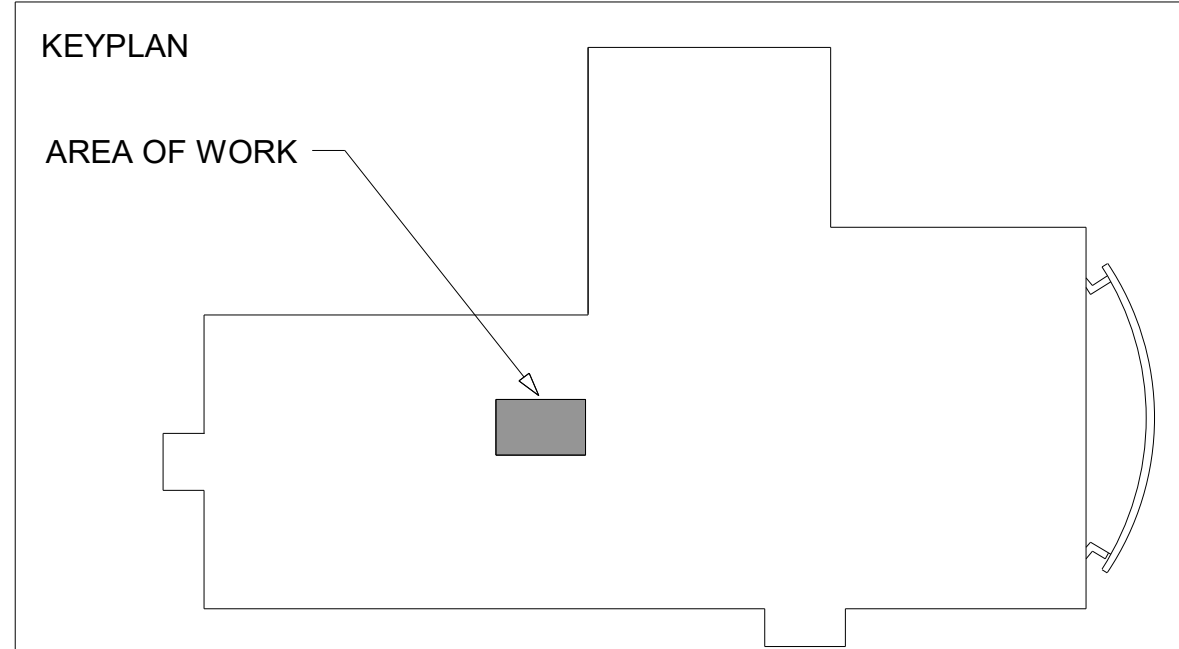
ENLARGED SECOND FLOOR PLAN - HEATING DEMOLITION
SCALE 1:50



ENLARGED SECOND FLOOR PLAN - AIR DISTRIBUTION
SCALE 1:50



ENLARGED SECOND FLOOR PLAN - AIR DISTRIBUTION DEMOLITION
SCALE 1:50



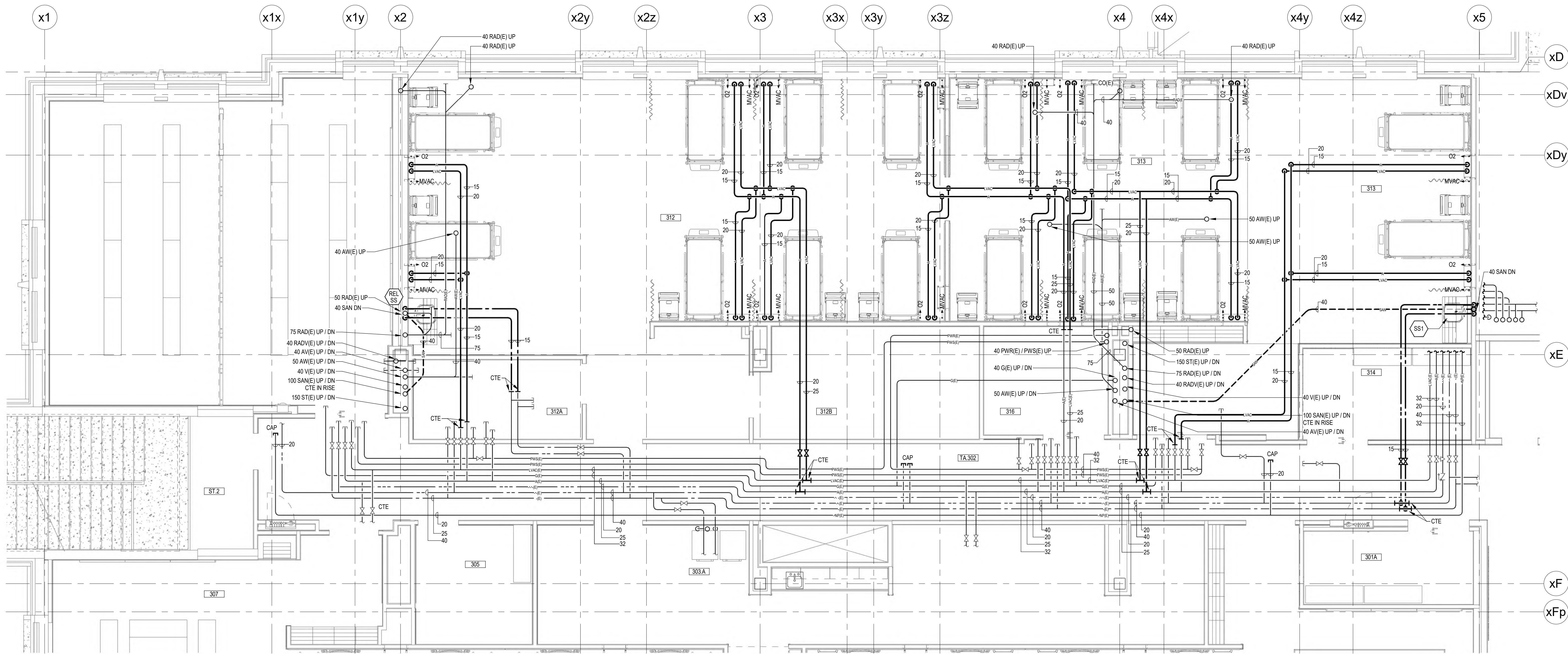
DO NOT SCALE. ALL DIMENSIONS AND MEASUREMENTS ARE TO BE CHECKED ON THE DRAWING. THE CONSULTANT SHALL BE RESPONSIBLE FOR THE ACCURACY OF THE INFORMATION PROVIDED. THE CONSULTANT SHALL BE RESPONSIBLE FOR THE ACCURACY OF THE INFORMATION PROVIDED. THE CONSULTANT SHALL BE RESPONSIBLE FOR THE ACCURACY OF THE INFORMATION PROVIDED.

Chorley + Bisset
CONSULTING ENGINEERS
201 QUEEN AVE. UNIT 800
TORONTO, ONT. M5G 1G1
2024-05-26 ISSUED FOR TENDER



WU LHSB RENOVATION
1151 Richmond St. London
ENLARGED SECOND FLOOR PLANS - NEW & DEMOLITION

WESTERN UNIVERSITY
Project No. 10500.2
Drawn By: NNT
Rev Date: 06/25/26

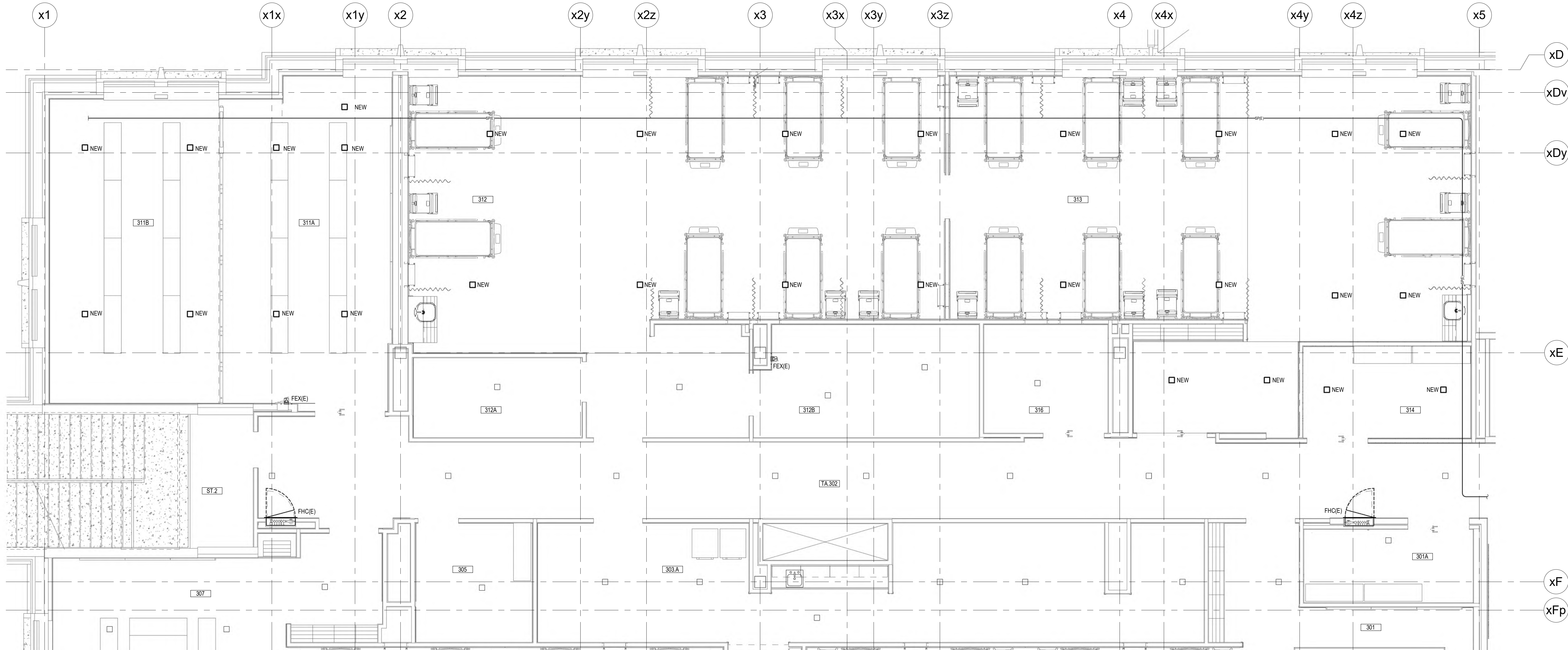


ENLARGED THIRD FLOOR PLAN - PLUMBING

SCALE: 1:50

NOTES:

1. MEDICAL GAS OUTLETS SUPPLIED AS PART OF HEADWALLS. HEADWALLS PROVIDED BY GENERAL TRADES. REFER TO ARCHITECTURAL DRAWINGS FOR HEADWALL ARRANGEMENTS AND OUTLET QUANTITIES. MECHANICAL TRADE TO CONNECT MEDICAL GAS OUTLETS TO LABORATORY VACUUM SYSTEM AND OXYGEN AND MEDICAL GAS OUTLETS TO COMPRESSED AIR SYSTEM. MEDICAL GAS CERTIFICATION AND/OR TESTING IS NOT APPROPRIATE OR REQUIRED. HEADWALLS WILL BE LABELED BY GENERAL TRADES TO INDICATE THAT OUTLETS ARE NOT TO BE USED FOR MEDICAL PURPOSES BUT ARE FOR TRAINING PURPOSES ONLY. THIS ARRANGEMENT WILL MATCH OTHER HEADWALL INSTALLATIONS IN THE BUILDING.
2. COMPRESSED AIR SYSTEM TO BE INSPECTED AND TESTED BY TSSA. SEE SPECIFICATIONS FOR DETAILS.
3. DASHED SANITARY PIPING IS BELOW FLOOR.



ENLARGED THIRD FLOOR PLAN - FIRE PROTECTION

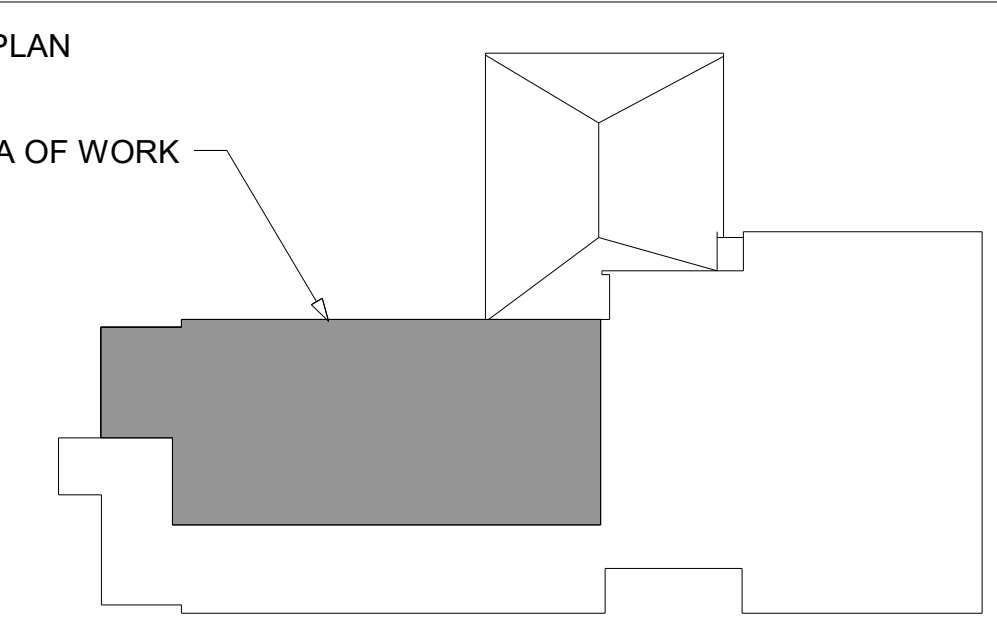
SCALE: 1:50

NOTES:

1. PROVIDE NEW SPRINKLER HEADS TO COMPLETELY PROTECT ALL AREAS OF THE RENOVATED SPACE AS SHOWN IN ACCORDANCE WITH NFPA 13 AND CBC. REWORK SPRINKLER BRANCH PIPING AS REQUIRED TO SUIT NEW SPRINKLER HEAD LOCATIONS IN NEW CEILING.
2. CAREFULLY COORDINATE ALL CEILING COMPONENTS BETWEEN MECHANICAL, ELECTRICAL AND ARCHITECTURAL DRAWINGS.
3. PROVIDE SPRINKLER COVERAGE ABOVE AND BELOW 1200mm AND WIDER DUCTWORK.

KEYPLAN

AREA OF WORK



DO NOT SCALE. ALL DIMENSIONS AND LOCATIONS ARE TO BE CHECKED BY GENERAL TRADES. REFER TO ARCHITECTURAL DRAWINGS FOR HEADWALL ARRANGEMENTS AND OUTLET QUANTITIES. MECHANICAL TRADE TO CONNECT MEDICAL GAS OUTLETS TO LABORATORY VACUUM SYSTEM AND OXYGEN AND MEDICAL GAS OUTLETS TO COMPRESSED AIR SYSTEM. MEDICAL GAS CERTIFICATION AND/OR TESTING IS NOT APPROPRIATE OR REQUIRED. HEADWALLS WILL BE LABELED BY GENERAL TRADES TO INDICATE THAT OUTLETS ARE NOT TO BE USED FOR MEDICAL PURPOSES BUT ARE FOR TRAINING PURPOSES ONLY. THIS ARRANGEMENT WILL MATCH OTHER HEADWALL INSTALLATIONS IN THE BUILDING.

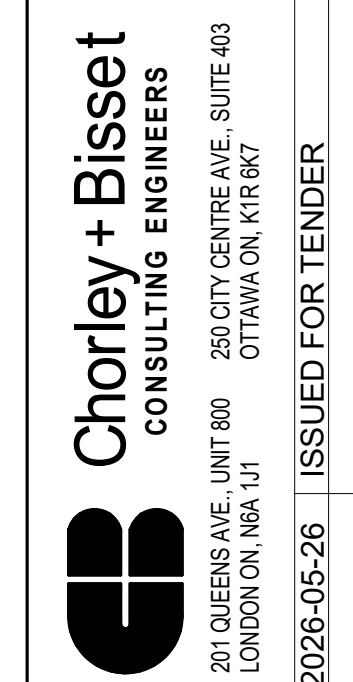
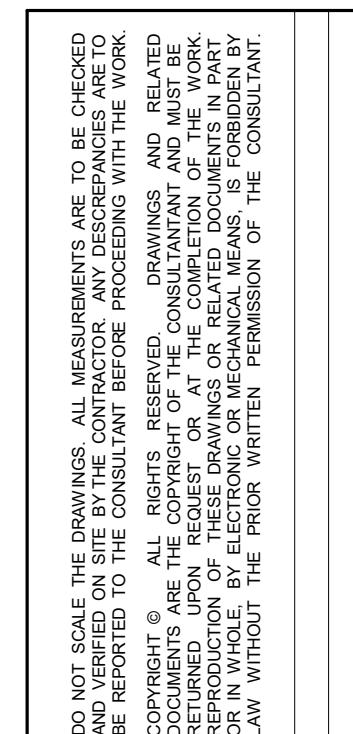
Chorley + Bisset
CONSULTING ENGINEERS
201 QUEEN AVE. UNIT 800
TORONTO, ONT. M5G 1G1
2025-05-26 ISSUED FOR TENDER



WESTERN UNIVERSITY
Project No. 10500.2
Drawn By: NNT
Rev Date: 05/25/26

WU LHSB RENOVATION
1151 Richmond St. London
ENLARGED THIRD FLOOR PLANS - PLUMBING & FIRE PROTECTION

M2.6

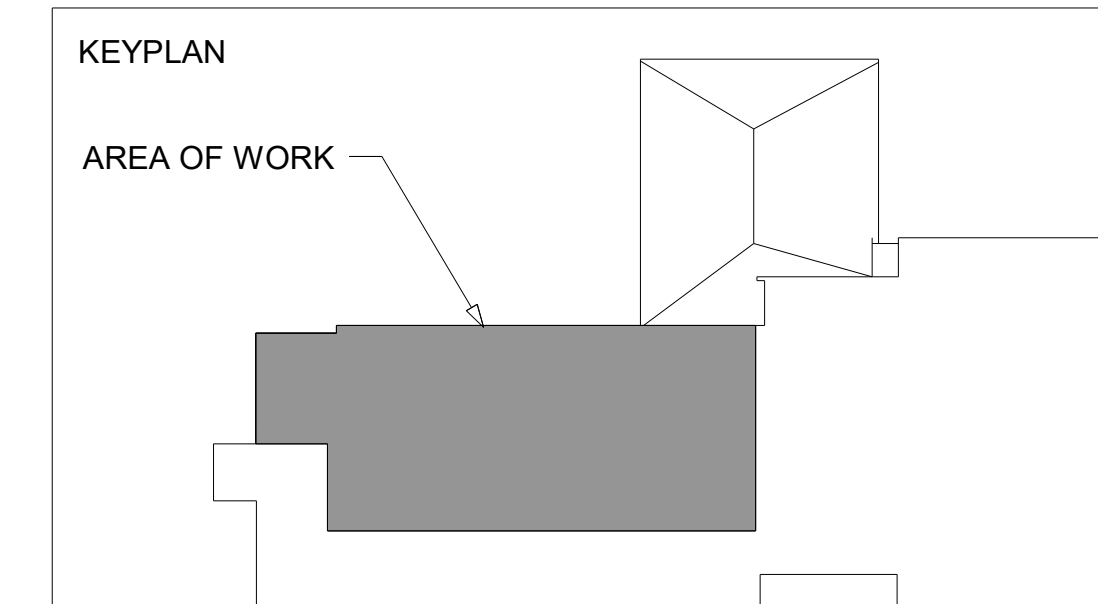
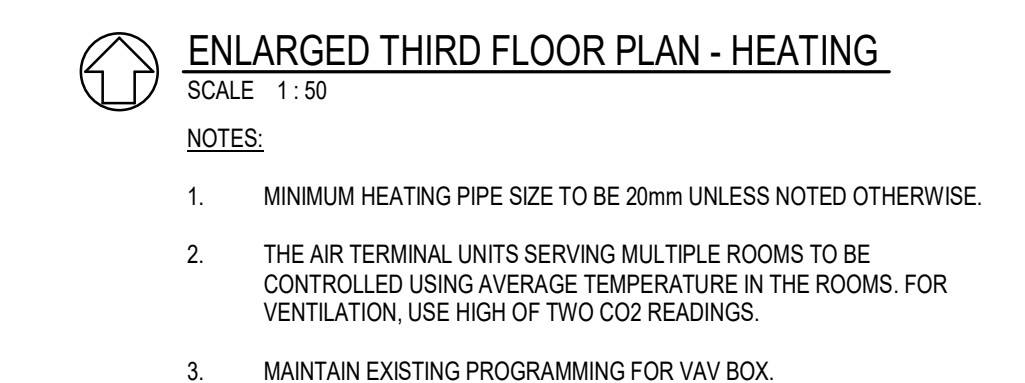


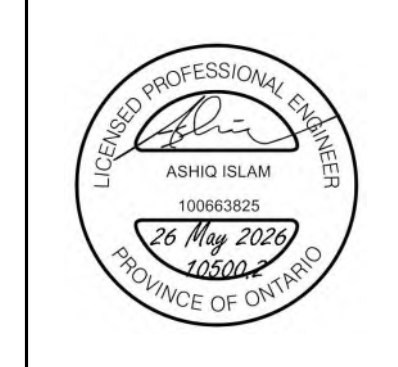
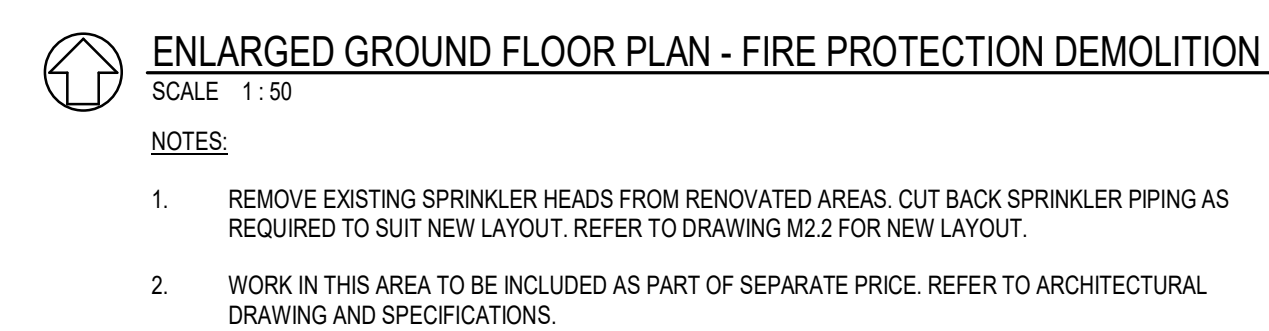
WU LHSB RENOVATION

151 Richmond St, London

ENLARGED THIRD FLOOR PLANS - HEATING & AIR DISTRIBUTION

M2.7



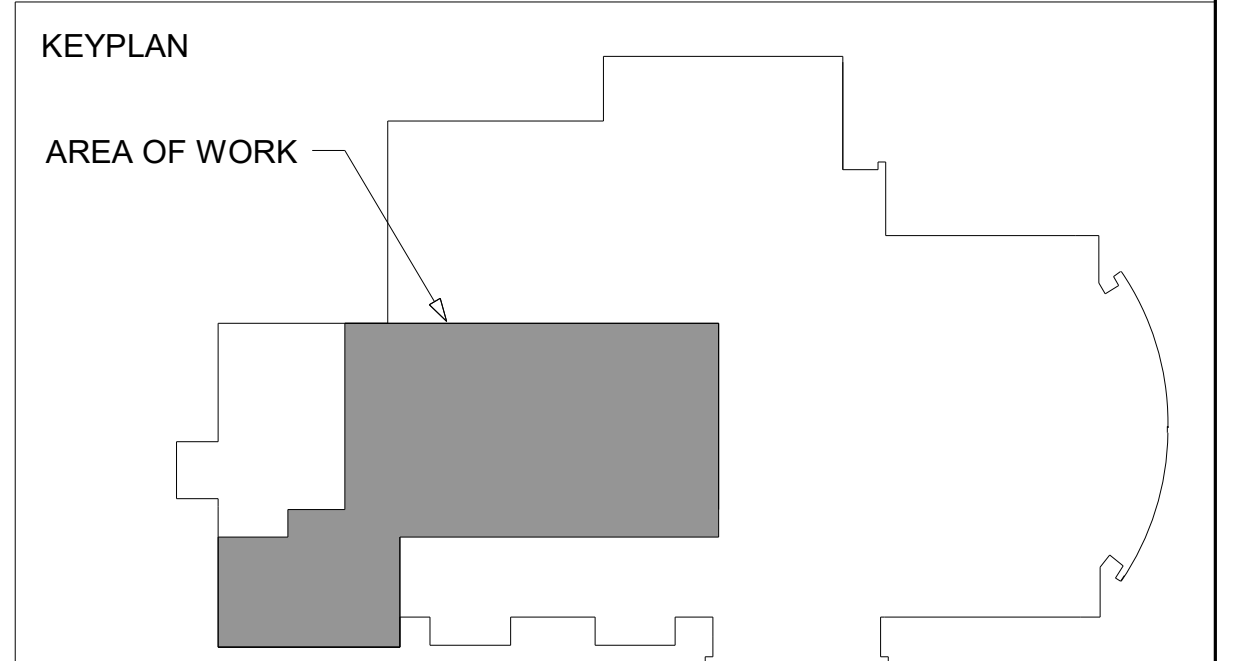


2026-05-26	ISSUED FOR TENDER																																																																																																	
------------	-------------------	--	--	--	--	--	--	--	--	--	--	--	--	--	--	--	--	--	--	--	--	--	--	--	--	--	--	--	--	--	--	--	--	--	--	--	--	--	--	--	--	--	--	--	--	--	--	--	--	--	--	--	--	--	--	--	--	--	--	--	--	--	--	--	--	--	--	--	--	--	--	--	--	--	--	--	--	--	--	--	--	--	--	--	--	--	--	--	--	--	--	--	--	--	--	--	--	--



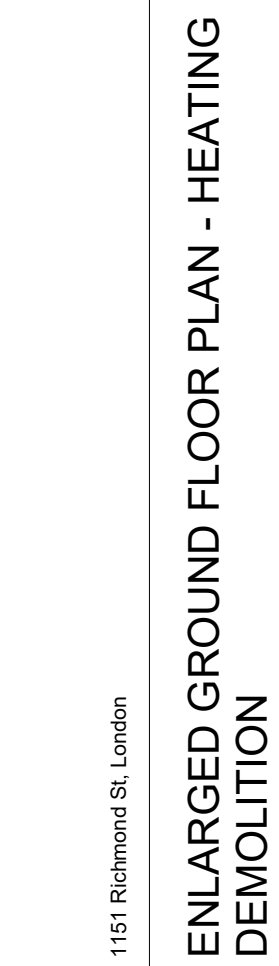
<h1>WU LHSB RENOVATION</h1>	1151 Richmond St. London	
	Project No: 10500.2	Drawn By: NNT Rev Date: 05/02/06

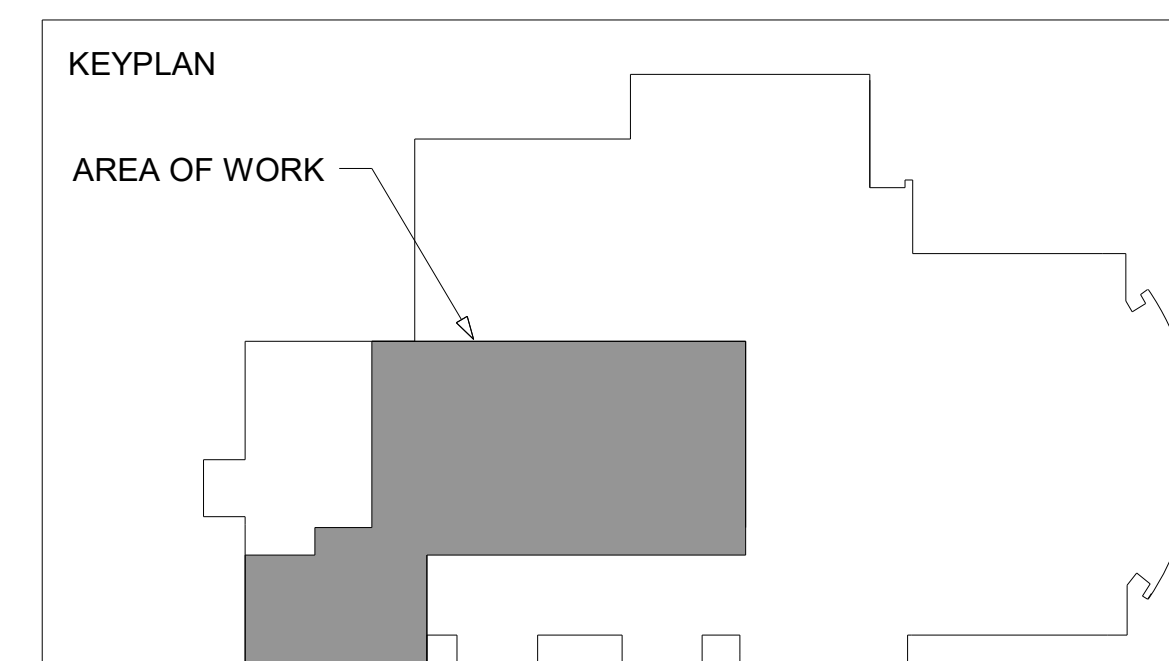
M3.2




NOTES:

1. RELOCATE THERMOSTAT TO SUIT NEW ARCHITECTURAL LAYOUT.
2. WHERE SHOWN, REMOVE EXISTING VAV TERMINAL, CONTROLS AND ALL ACCESSORIES.

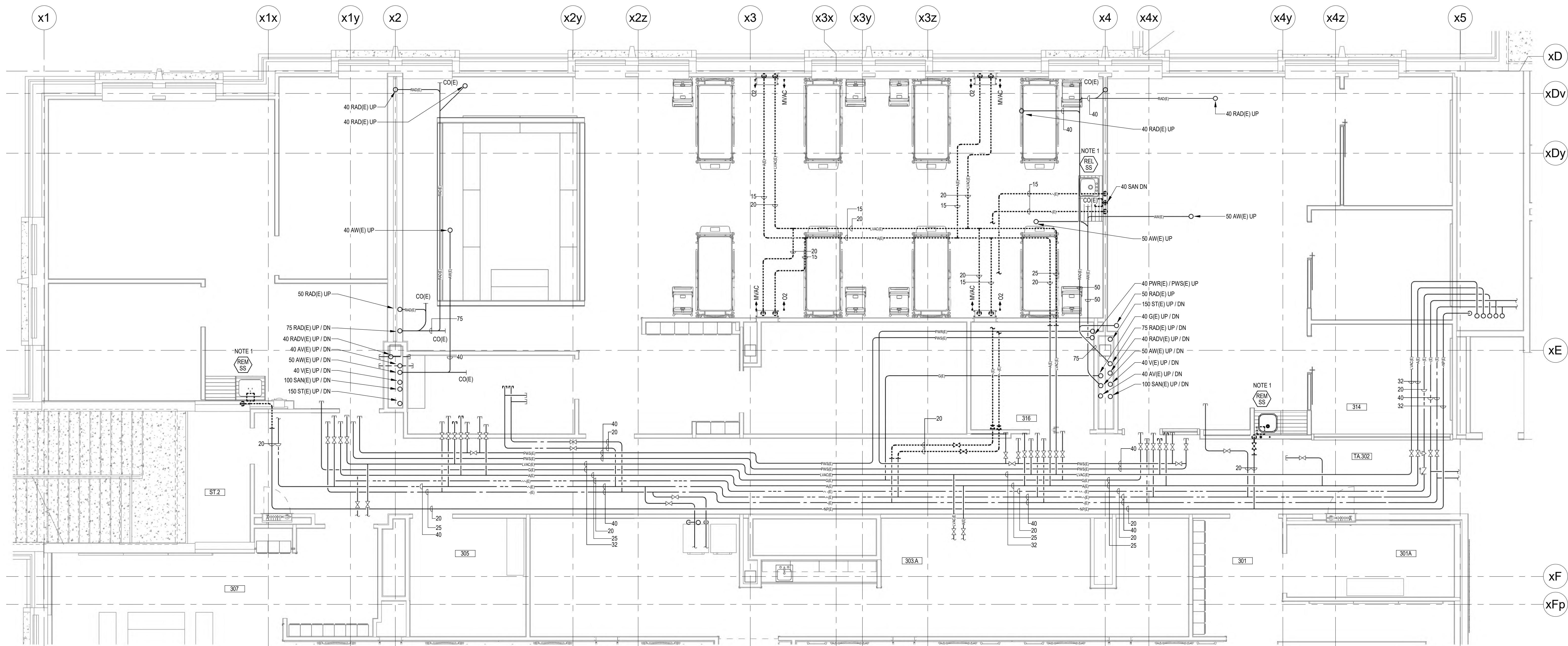




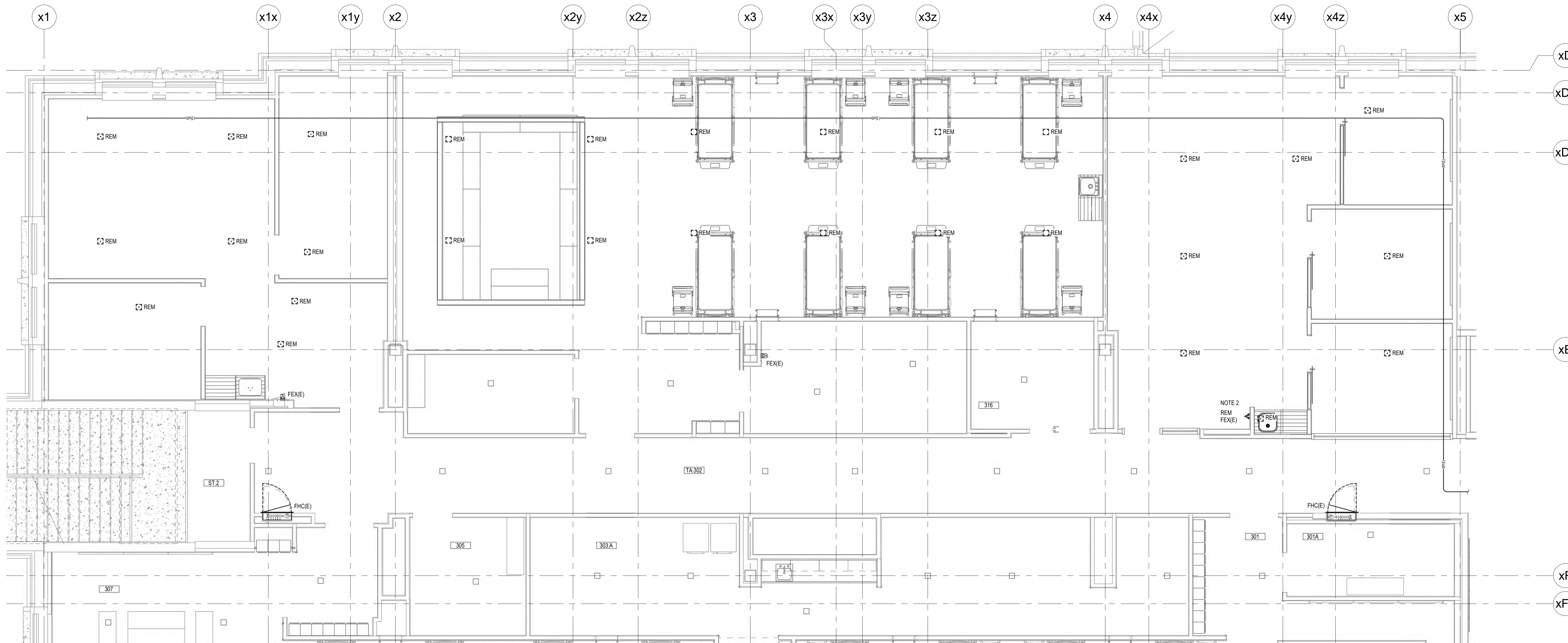
 Chorley + Bisset CONSULTING ENGINEERS	201 QUEENS AVE. UNIT 800 LONDON ON M6A 1J1	250 CITY CENTRE AVE. SUITE 403 OTTAWA ON K1R 8K7	ISSUED FOR TENDER
	2026-05-26		



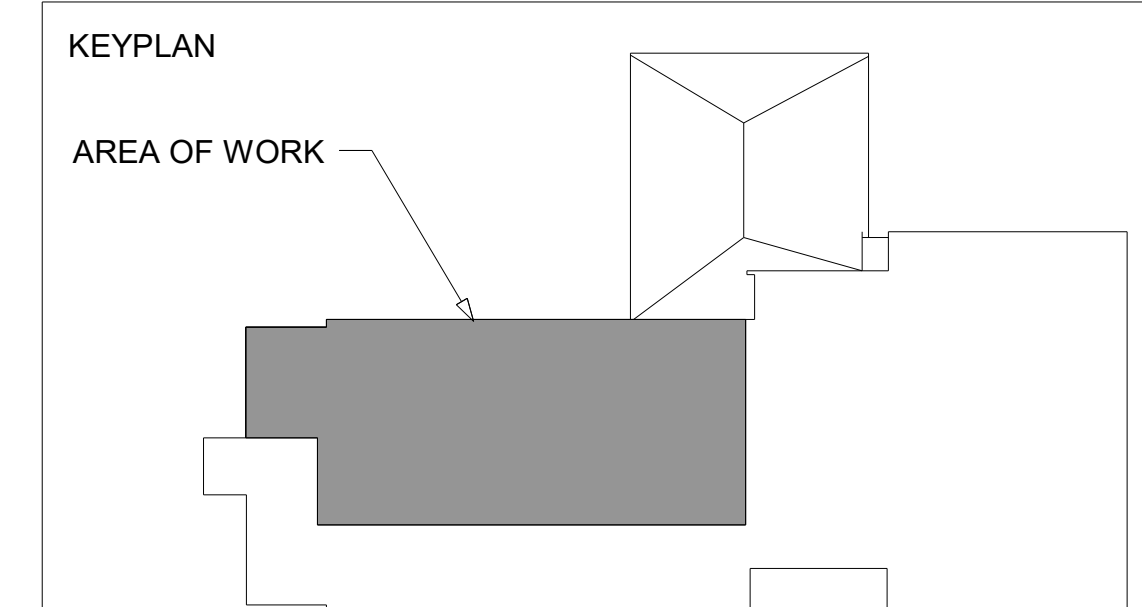
M3.4



ENLARGED THIRD FLOOR PLAN - PLUMBING DEMOLITION
SCALE: 1:50
NOTES:
1. CUT BACK AND CAP SANITARY BELOW FLOOR.



ENLARGED THIRD FLOOR PLAN - FIRE PROTECTION DEMOLITION
SCALE: 1:50
NOTES:
1. REMOVE EXISTING SPRINKLER HEADS FROM RENOVATED AREAS. CUT BACK SPRINKLER PIPING AS REQUIRED TO SUIT NEW LAYOUT. REFER TO DRAWING M2.8 FOR NEW LAYOUT.
2. TURN OVER FIRE EXTINGUISHER TO OWNER.

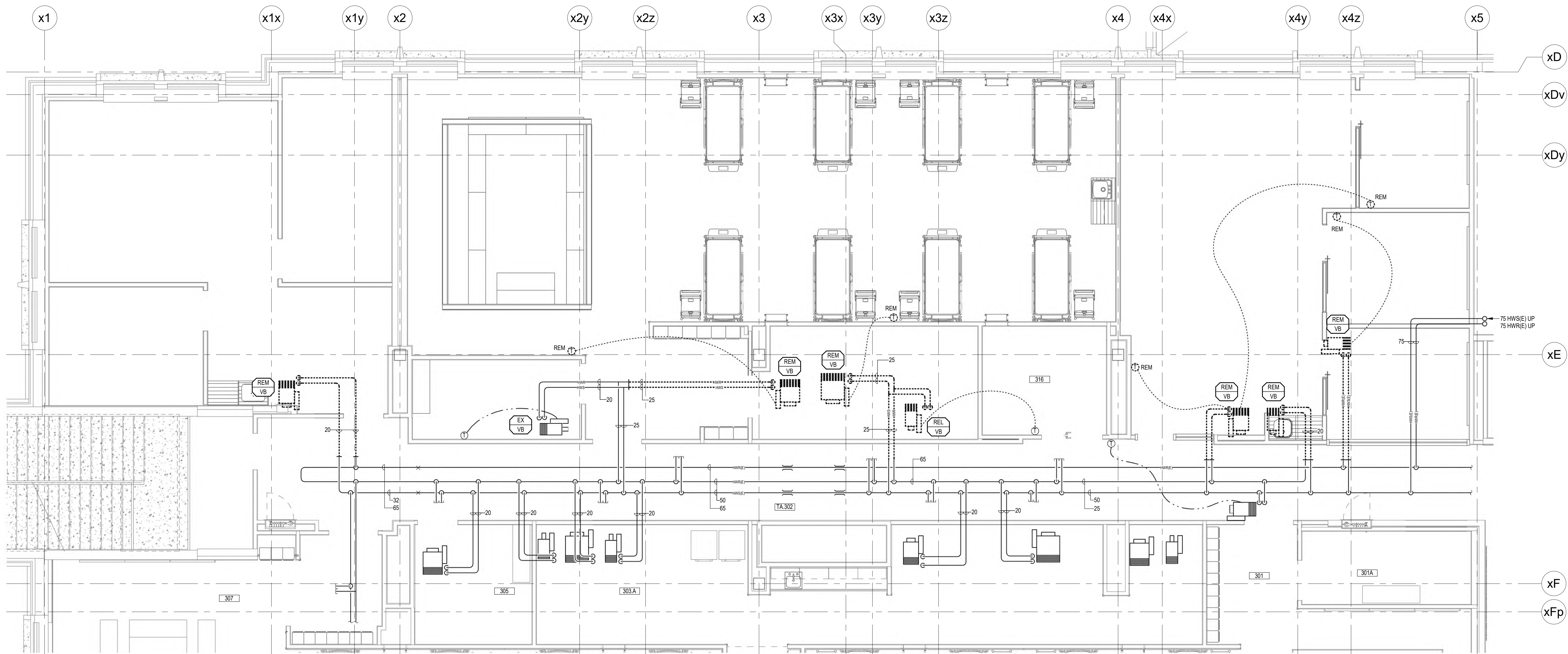


Chorley + Bisset
CONSULTING ENGINEERS
2810 QUEEN AVE. UNIT 800
TORONTO, ONT. M5G 1G2
2025-05-26 ISSUED FOR TENDER

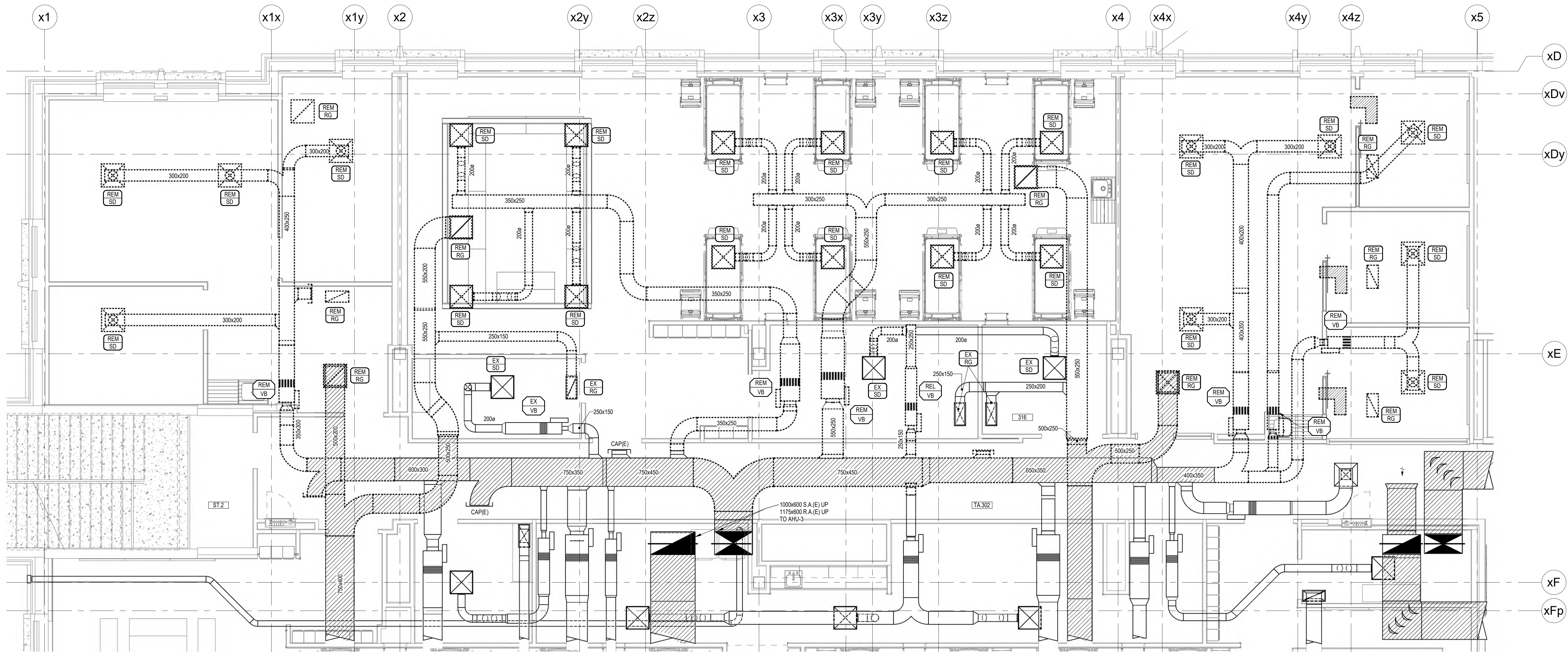


WU LHSB RENOVATION
1151 Richmond St. London
Project No. 10500.2
Drawn By: WNT
Rev Date: 06/22/25
ENLARGED THIRD FLOOR PLANS - PLUMBING & FIRE PROTECTION DEMOLITION

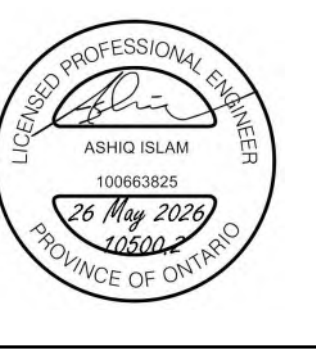
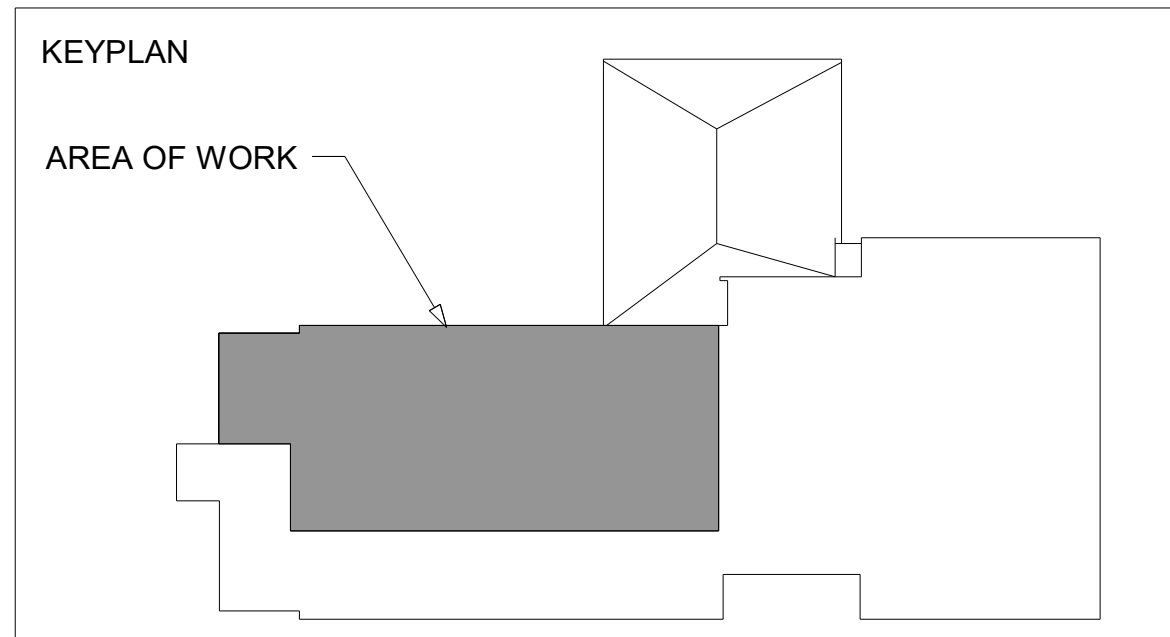
M3.5



ENLARGED THIRD FLOOR PLAN - HEATING DEMOLITION
SCALE 1:50
NOTES:
1. WHERE SHOWN, REMOVE EXISTING VAV TERMINAL, CONTROLS AND ALL ACCESSORIES.



ENLARGED THIRD FLOOR PLAN - AIR DISTRIBUTION DEMOLITION
SCALE 1:50



Chorley + Bisset
CONSULTING ENGINEERS
201 QUEEN AVE. UNIT 800
TORONTO, ONT. M5G 1G1
2020-05-26 ISSUED FOR TENDER



WU LHSB RENOVATION
ENLARGED THIRD FLOOR PLANS - HEATING & AIR DISTRIBUTION DEMOLITION

WESTERN UNIVERSITY	Project No.	10500.2
1155 Richmond St. London	Drawn By:	ANT
	Rev. Date:	06/22/26